

Assembly Instructions: ASUS* Z62F

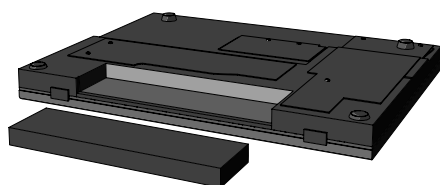


Fig.1

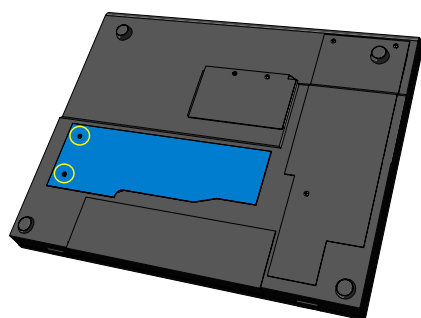


Fig.2

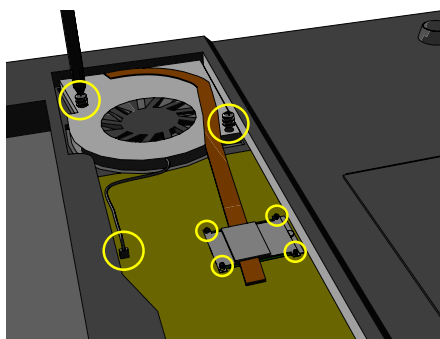


Fig.3

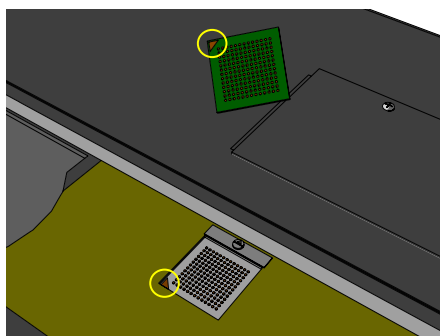


Fig.4

Processor

Precaution:

1. Ensure there is no power source connected to the notebook and remove battery pack. (See Fig.1)
2. Take the necessary steps to minimize risk of electrostatic discharge (ESD).

Removing the Thermal Solution:

1. Remove the panel located on the underside of the notebook, adjacent to the battery (two screws hold panel in place). (See Fig.2)

2. Loosen the four screws from the thermal solution cooling plate that are located on top of the processor.

Note: These screws are smaller than the panel screws. Each screw position is numbered 1, 2, 3 and 4. Follow this sequence when removing or replacing the thermal solution.

3. Disconnect the fan cable from the motherboard and remove the two additional screws located near the heat sink fan. (See Fig.3)

4. When all the screws are detached, remove the thermal solution by lifting the cooling plate side of the thermal solution slightly upward and then gently pulling the fan side away from the edge of the notebook.

Note: It is recommended that you turn each screw only three revolutions at a time. For example, when removing the thermal solution, start with screw number 1 and turn three revolutions counter clockwise. Then move to screw number 2 and turn three revolutions. Follow the same steps for screw number 3 and then 4. Repeat this process approximately three times, or until all screws release from the motherboard. This will ensure that the cooling plate surface is secured (or removed) evenly across the processor surface.

Securing the Processor:

1. When installing a processor be sure to align pin one of the processor with pin one on the processor socket. (See Fig.4)
2. Once the processor is properly in place, turn the retention screw 180 degrees clockwise to secure.
3. Check to ensure that the thermal interface material (TIM) is adequately applied to the processor. Reapply the TIM if necessary.
4. Replace the thermal solution.

Assembly Instructions: ASUS* Z62F

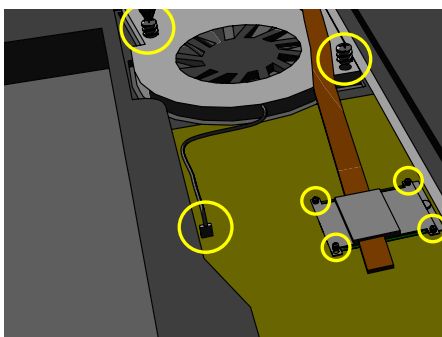


Fig.5

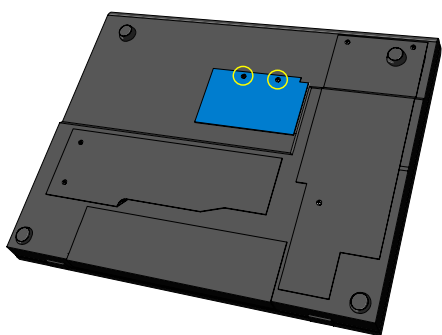


Fig.6

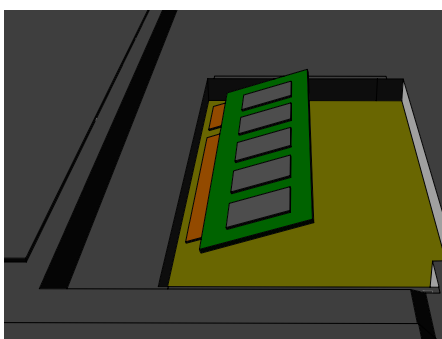


Fig.7

5. **Important Note:** Check to ensure the fan power lead is connected to the motherboard. (See Fig.5)

6. Replace panel and secure with the same two screws that were previously removed.

Memory

Precaution:

1. Ensure there is no power source connected to the notebook and remove battery pack.
2. Take the necessary steps to minimize risk of electrostatic discharge (ESD).

Installing the Memory Module:

1. Remove the small panel located approximately in the middle of the notebooks underside (two screws hold the panel in place). (See Fig.6)

Note: These screws may be slightly longer than the other panel screws.

2. Insert the module into the socket at a slight angle. (See Fig.7)
3. Ensure that the module is properly seated in socket.
4. Gently press downward so that the module is parallel with socket. The retention clips should slide into place and secure the memory module.

Removing the Memory Module:

1. Gently press down and slightly outward on the socket retention clips at the same time with your fingers. This will release the memory module upward.
2. Remove the memory module from the socket at a slight angle.
3. Replace the panel and secure with the same two screws that were previously removed.

Assembly Instructions: ASUS* Z62F

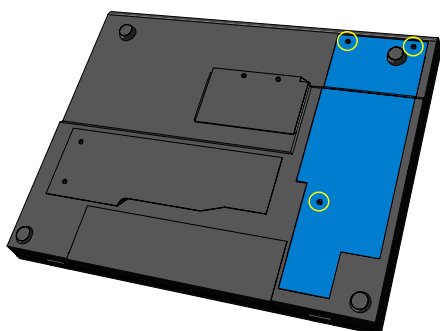


Fig.8

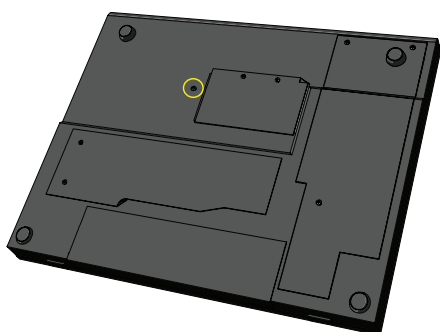


Fig.9

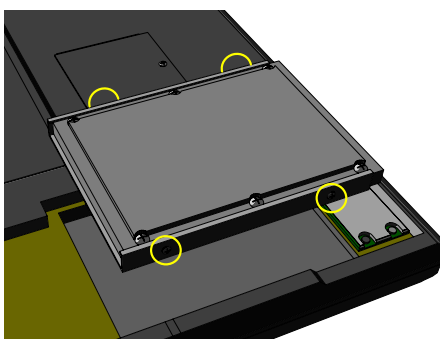


Fig.10

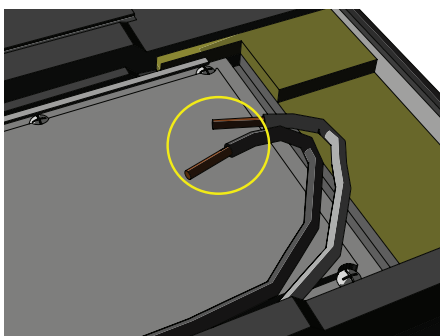


Fig.11

Hard Drive

Precaution:

1. Ensure there is no power source connected to the notebook and remove the battery pack.
2. Take the necessary steps to minimize risk of electrostatic discharge (ESD).

Installing the Hard Drive:

1. Remove the hard drive panel located on the bottom surface of the notebook (three screws hold the panel in place). (See Fig.8)

Note: The screw location for Optical Disk Drive removal or replacement is located near the center of the bottom surface of the notebook, next to the memory panel. (See Fig.9)

2. Place the hard drive in the bracket and secure with four screws. (See Fig.10)
3. When the hard drive is properly attached to bracket, turn it upside down and place in the recessed compartment. Align the hard drive connector to motherboard connector and slide until securely attached.
4. Secure the panel with the same screws that were previously removed.

Removing the Hard Drive:

1. Gently slide the bracket with the hard drive attached away from the motherboard connector. When the hard drive connector is separated, lift out of recessed compartment.

Wireless Adapter

Precaution:

1. Ensure there is no power source connected to the notebook and remove battery pack.
2. Take the necessary steps to minimize risk of electrostatic discharge (ESD).

Installing the Wireless Adapter:

1. Remove the hard drive panel located on the bottom surface of the notebook (three screws hold the panel in place).

Important Note: It is recommended that a non-conductive material is placed around the antenna connector leads when not in use. The metal connectors should not be in direct contact with other system circuitry. This may cause damage to the system. (See Fig.11)

Assembly Instructions: ASUS* Z62F

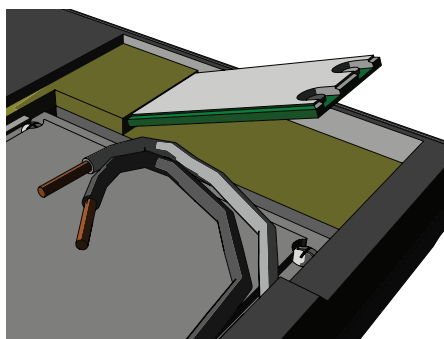


Fig.12

2. Insert the adapter into the socket at a slight angle. (See Fig.12)
3. Ensure that the adapter is properly seated in the socket.
4. Gently press downward so that the module is parallel with the socket. The retention clips should slide into place and secure the adapter.
5. Connect the antenna by attaching the white wire to the connector labeled "MAIN" and the black wire to the connector labeled "AUX".

Removing the Wireless Adapter:

1. Remove antenna leads.
2. Gently pull the socket retention clip away from the adapter edge. This will release the wireless adapter upward.
3. Remove the adapter from the socket at a slight angle.

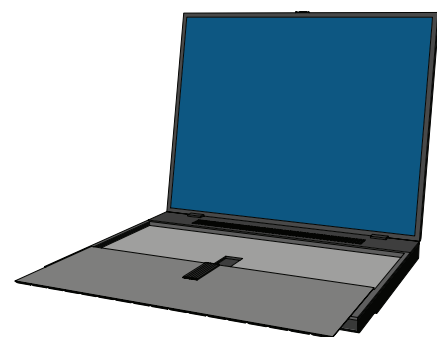


Fig.13

Keyboard

Precaution:

1. Ensure there is no power source connected to the notebook and remove the battery pack.
2. Take the necessary steps to minimize risk of electrostatic discharge (ESD).

Installing the Keyboard:

1. Place the keyboard panel upside down of the top of the notebook surface. (See Fig.13)
2. Locate the FPC ribbon cable connector and ensure the tabs are pulled out.
3. Insert the keyboard FPC ribbon cable into the connector socket and slide the two connector tabs inward to secure the cable. (See Fig.14)

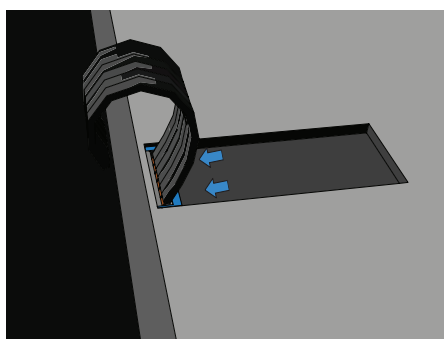


Fig.14

Note: Because the ribbon cable is very thin, it can be erroneously placed into a slot above the connector socket. If the cable does not stay in place after inserting it into the socket, check to ensure the cable is in the connector socket and that the connector tabs have been properly engaged.

4. Gently turn the keyboard over and insert the lower edge of keyboard into the chassis at a slight angle. (See Fig.15)
5. Lower the top edge of the keyboard and gently push the five latches to secure the keyboard.



Fig.15

Assembly Instructions: ASUS* Z62F

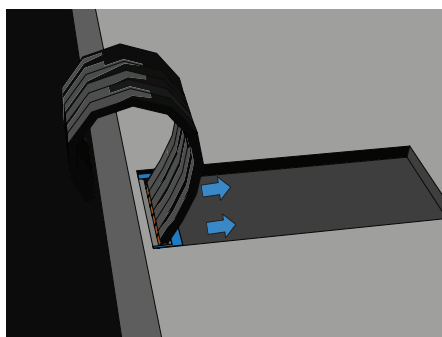


Fig.16

Note: This model may also use two screws to secure the keyboard. Attach points for the screws would be located in the upper right and the upper left corners of the keyboard.

Removing the Keyboard:

1. Gently push in the five latches at the top of the keyboard with a pair of tweezers or a single-slotted screwdriver as you slowly lift the keyboard plate up.
2. Place keyboard upside down.
3. Using a pair of tweezers, disengage the connector tabs by gently pulling them away from the connector.
4. Gently slide the FPC ribbon cable out of the connector socket. (See Fig.16)



Assembly Instructions: ASUS* Z62F

Disclaimers

*Other names and brands may be claimed as the property of others. ©2006 Intel Corporation.

All boxed Intel products are intended to be professionally installed. This product integration training and the guidance contained herein is provided to Intel customers as a convenience. Intel assumes no responsibility for any errors contained in this training and has no liabilities or obligations for any damages arising from or in connection with the use of this training and the guidance contained herein. Intel is not obligated to provide any support or assistance with regard to the information provided in this training. Consult all product manufacturer's documentation before attempting to install or remove Intel boxed products.

INFORMATION IN THIS PRODUCT INTEGRATION TRAINING IS PROVIDED IN CONNECTION WITH INTEL PRODUCTS. EXCEPT AS PROVIDED IN INTEL'S TERMS AND CONDITIONS OF SALE FOR SUCH PRODUCTS. INTEL ASSUMES NO LIABILITY WHATSOEVER, AND INTEL DISCLAIMS ANY EXPRESS OR IMPLIED WARRANTY RELATING TO SALE AND/OR USE OF INTEL PRODUCTS, INCLUDING LIABILITY OR WARRANTIES RELATING TO FITNESS FOR A PARTICULAR PURPOSE, MERCHANTABILITY, OR INFRINGEMENT OF ANY PATENT, COPYRIGHT, OR OTHER INTELLECTUAL PROPERTY RIGHT.

All products, dates, and figures are preliminary and subject to change without notice. Intel may make changes to this training and product descriptions at any time, without notice. Intel, Pentium, Intel Inside, NetBurst, Centrino, Celeron, the Intel Inside logo and the Intel logo are trademarks or registered trademarks of Intel Corporation or its subsidiaries in the United States and other countries.